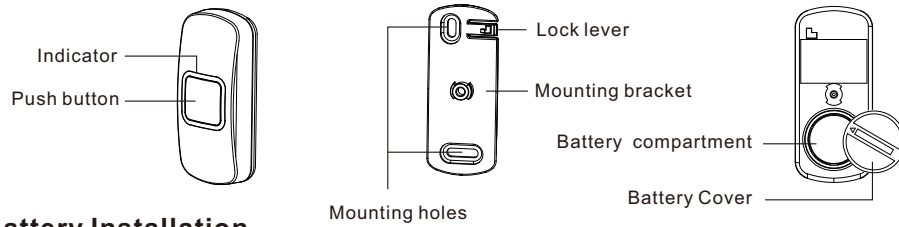


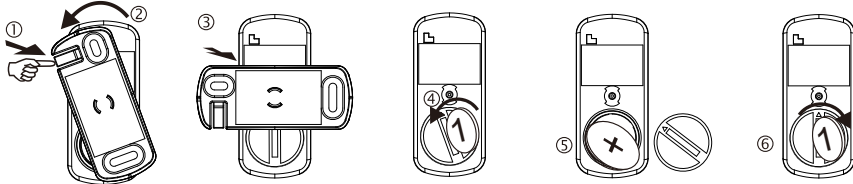
USER MANUAL

BELL PRESS

Part & Function



Battery Installation



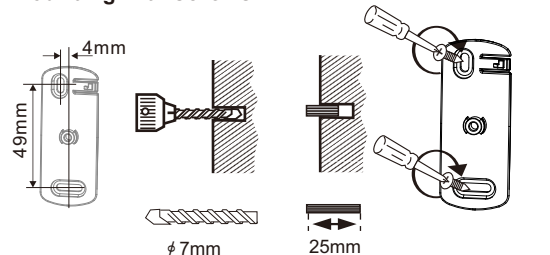
1. Use the finger to unlock the lock lever
2. Rotate the mounting bracket and bell press into 90 degree.
3. Remove the mounting bracket from the unit.
4. Rotate the Battery cover using a coin.
5. Insert a CR2032 battery to battery compartment provided.
6. Close the battery cover using a coin.

Matching (Pair)

Set the receiver to pairing mode follow the instruction of the receiver. Press the button of the bell press to pair. Then follow the instruction of the receiver to complete the operation.

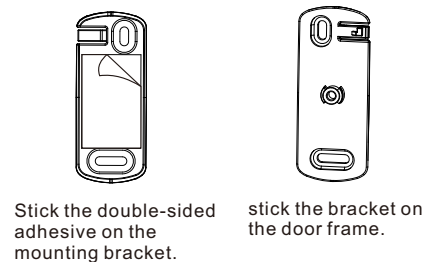
Install

Mounting with screws



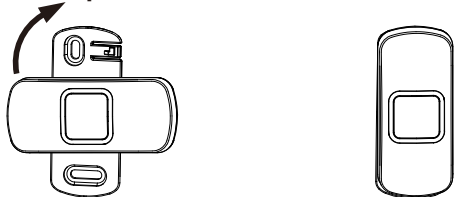
Requires an electric drill for holes to fix the wall bracket with the provided ram plug and screws.

Mounting With Double-sided adhesive



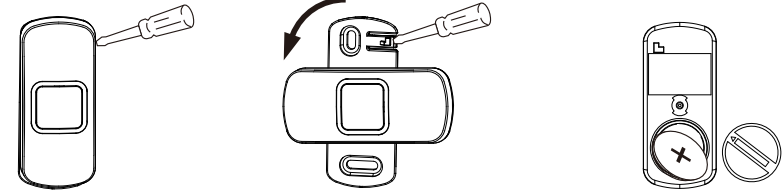
Stick the double-sided adhesive on the mounting bracket. stick the bracket on the door frame.

Put the bell press to the bracket



Put the bell press to the bracket with 90 degree. Rotate the bell press clockwise until you fell locked

Replace Battery



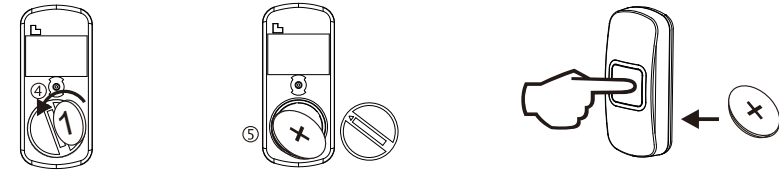
Use a small flat screwdriver to release the lock lever.

Rotate the bell press anti-clockwise with 90 degree and pull out the unit.

Replace battery

Code Conflict

If the bell press coding is the same as another transmitter you must change the code. When you have changed the code re-pair the telephone signaler.



Open the battery cover

Take out the battery

Press and hold the test button, insert the battery whilst holding the button for 5 seconds. The LED will flash 5 times when a new code is generated

Battery Low

When the battery is battery low, It will send the battery low information to the receiver together with trigger signal. The battery low information will show on the receiver.

FCC Statement:

This device complies with part 15 of the FCC Rules. Operation is subject to the following two conditions: (1) This device may not cause harmful interference, and (2) this device must accept any interference received, including interference that may cause undesired operation.

Any Changes or modifications not expressly approved by the party responsible for compliance could void the user's authority to operate the equipment.

Note: This equipment has been tested and found to comply with the limits for a Class B digital device, pursuant to part 15 of the FCC Rules. These limits are designed to provide reasonable protection against harmful interference in a residential installation. This equipment generates uses and can radiate radio frequency energy and, if not installed and used in accordance with the instructions, may cause harmful interference to radio communications. However, there is no guarantee that interference will not occur in a particular installation. If this equipment does cause harmful interference to radio or television reception, which can be determined by turning the equipment off and on, the user is encouraged to try to correct the interference by one or more of the following measures:

- Reorient or relocate the receiving antenna.
- Increase the separation between the equipment and receiver.
- Connect the equipment into an outlet on a circuit different from that to which the receiver is connected.
- Consult the dealer or an experienced radio/TV technician for help.

